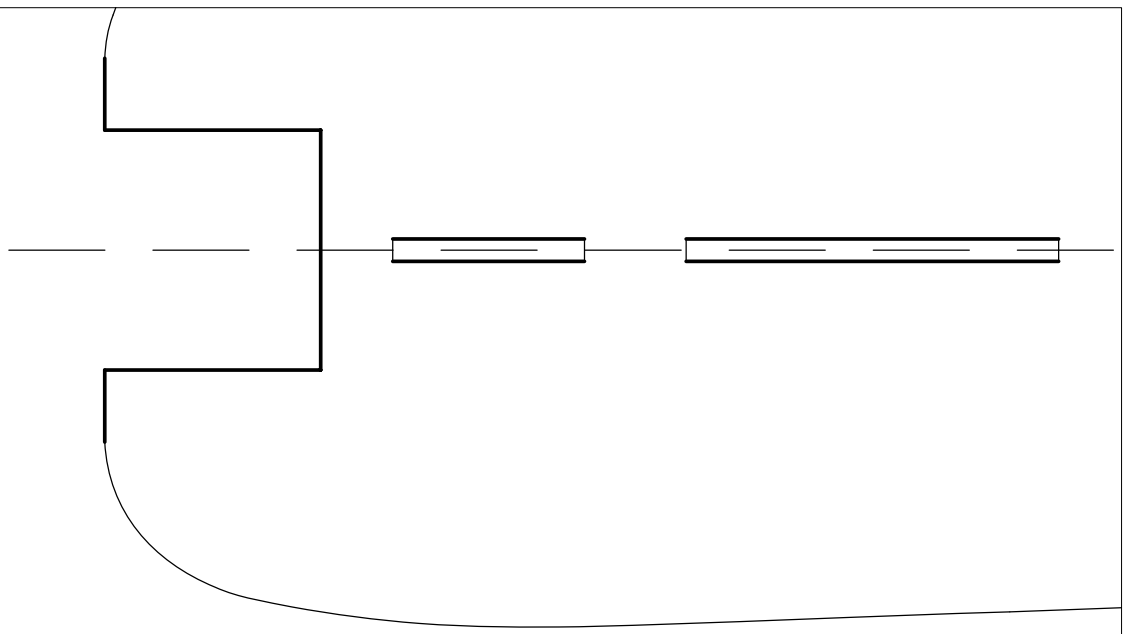


Note - Strut at
locations for T

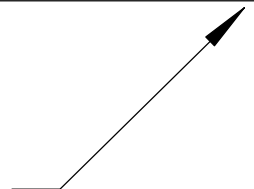


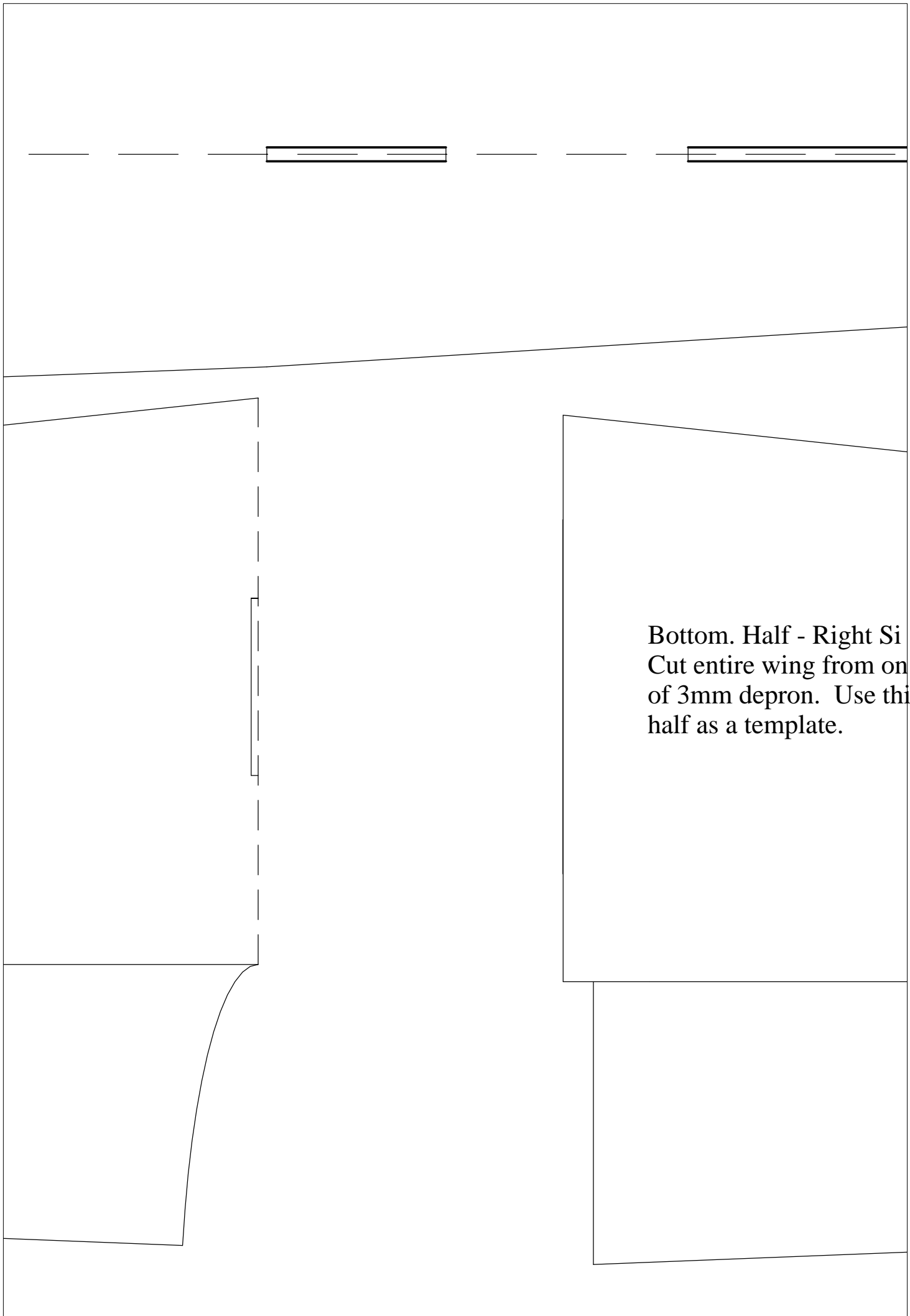
Top Wing Half - Left Side
Cut entire wing from one piece
of 3mm depron. Use this wing
half as a template.



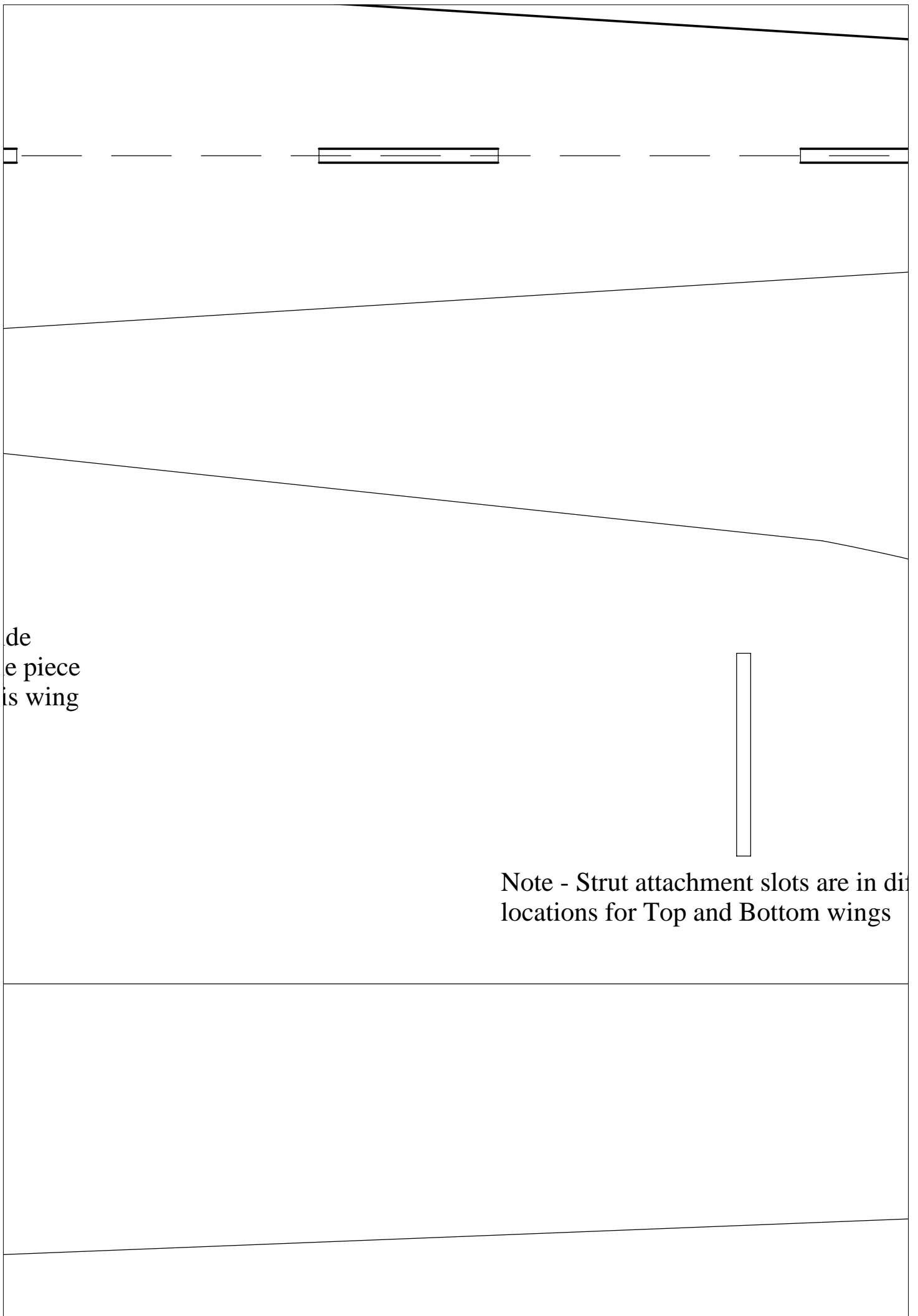
Attachment slots are in different
Top and Bottom wings

Use 1mm x 3mm Flat Carbon Rod along the
entire trailing edge of top and bottom wing.
No need for carbon along leading edge.





Bottom. Half - Right Side
Cut entire wing from one
piece of 3mm depron. Use this
half as a template.



The piece
is wing

Note - Strut attachment slots are in different locations for Top and Bottom wings



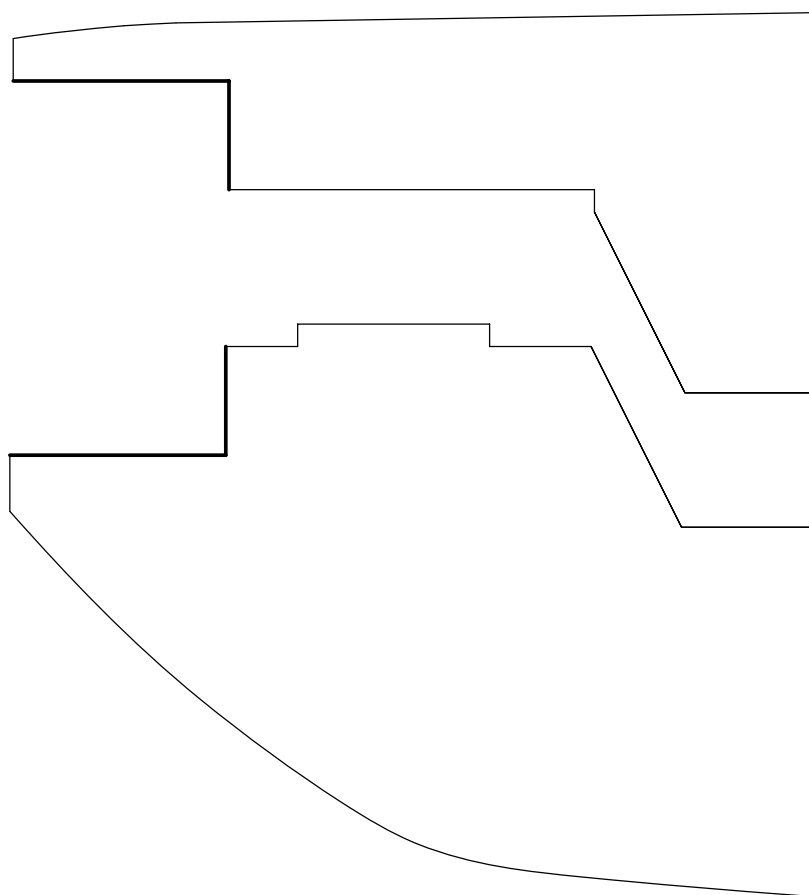
fferent

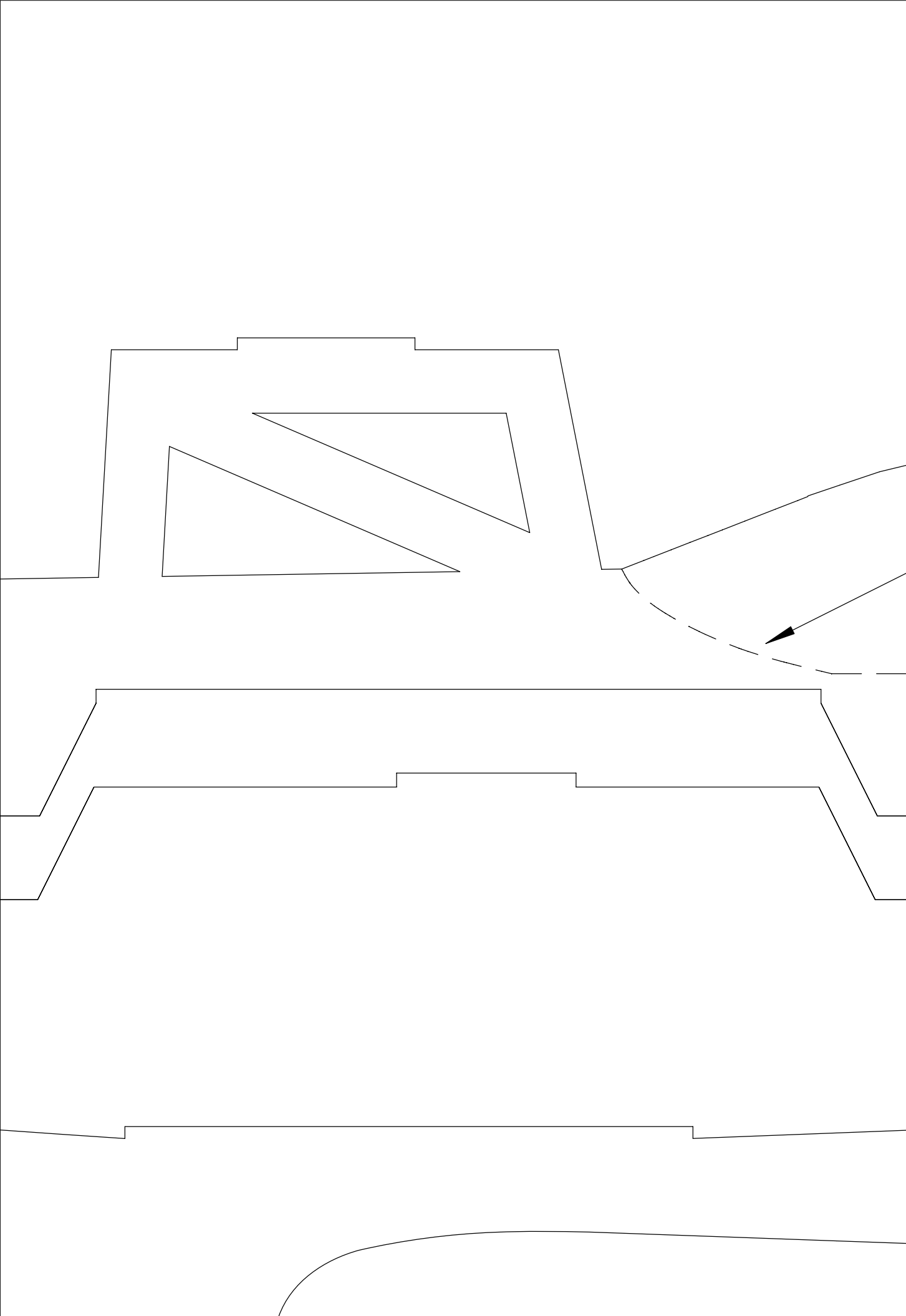
Echelon 28

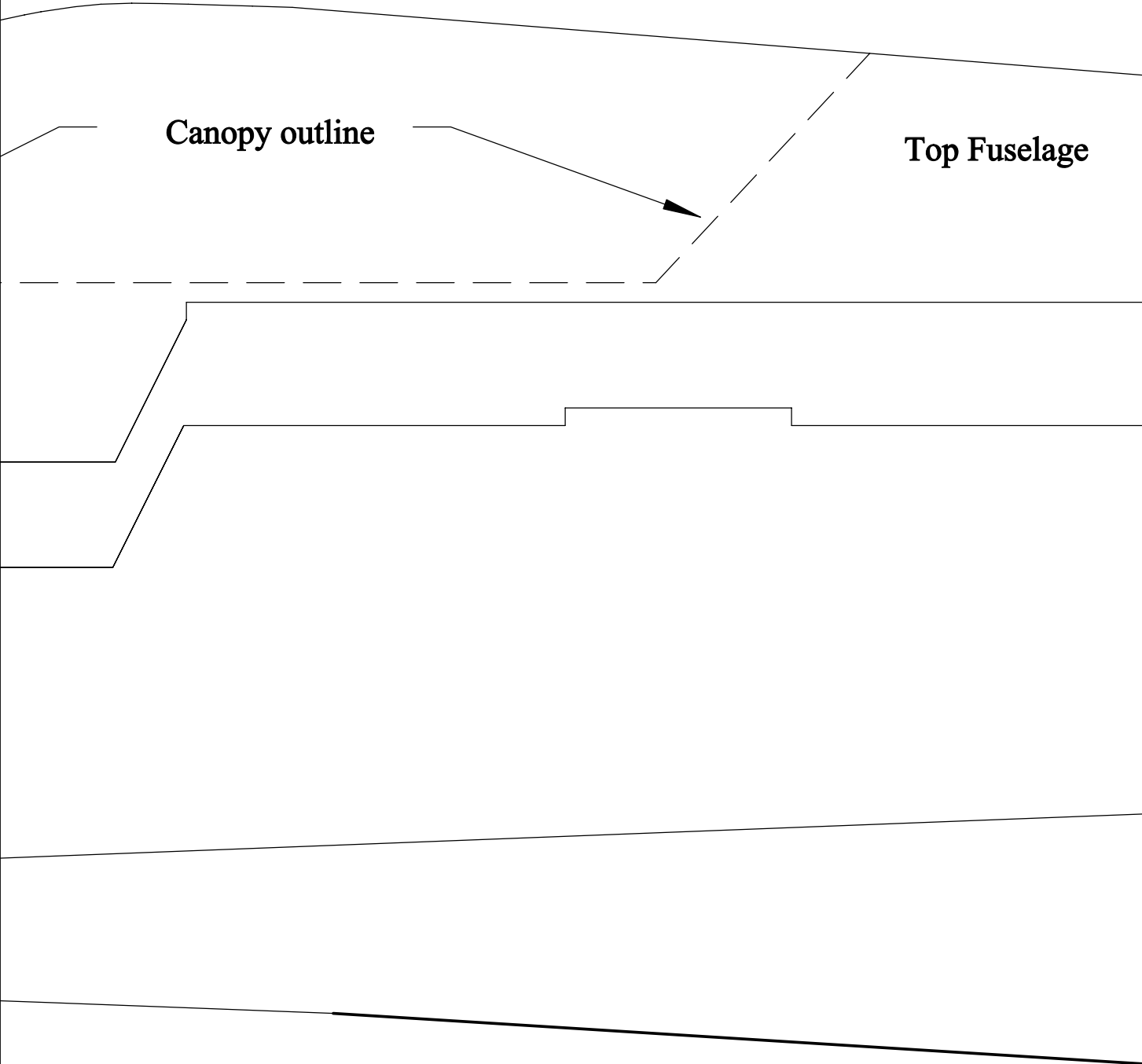
For CDRom Type motors

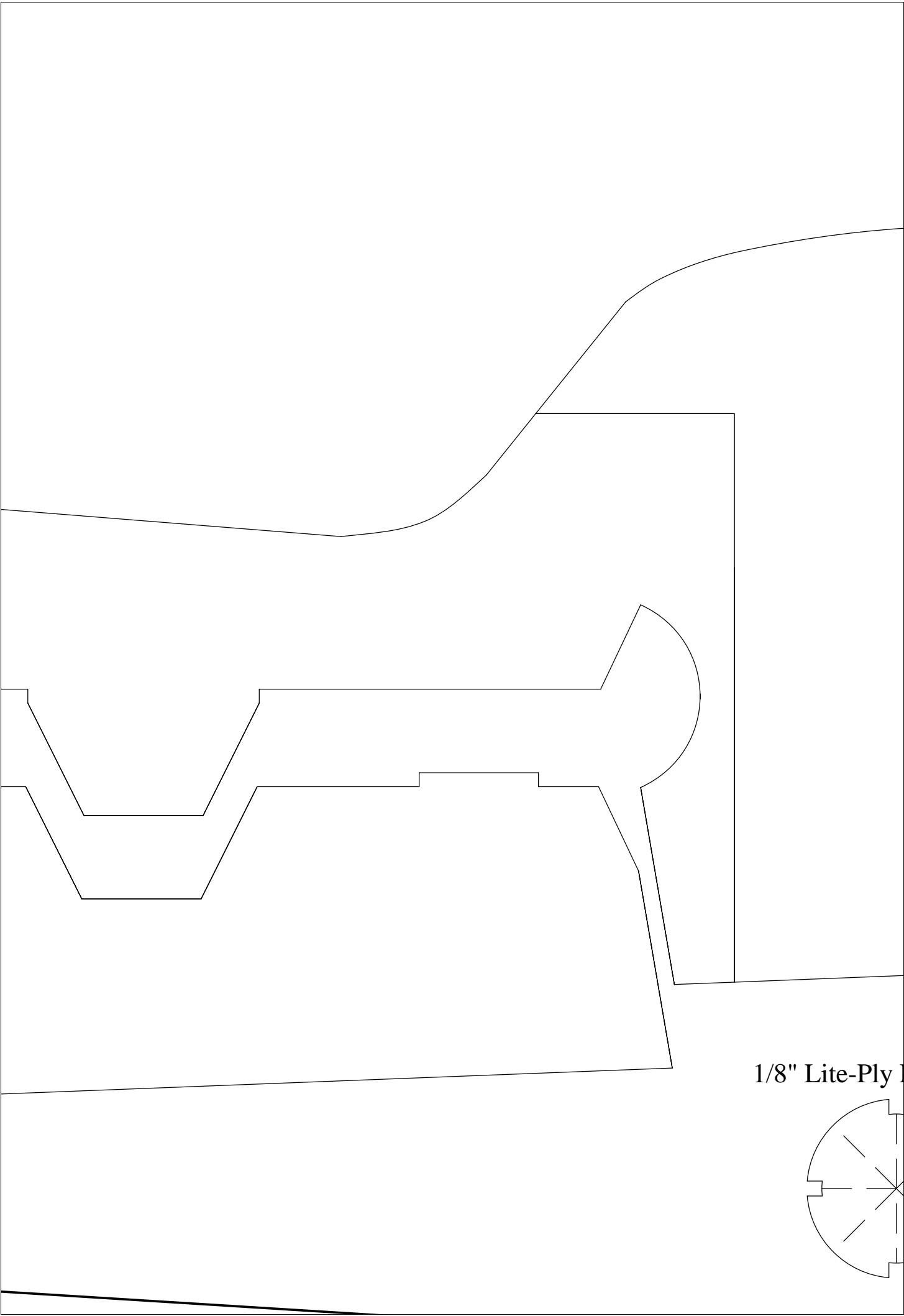
Designed and drawn by Tim Hart

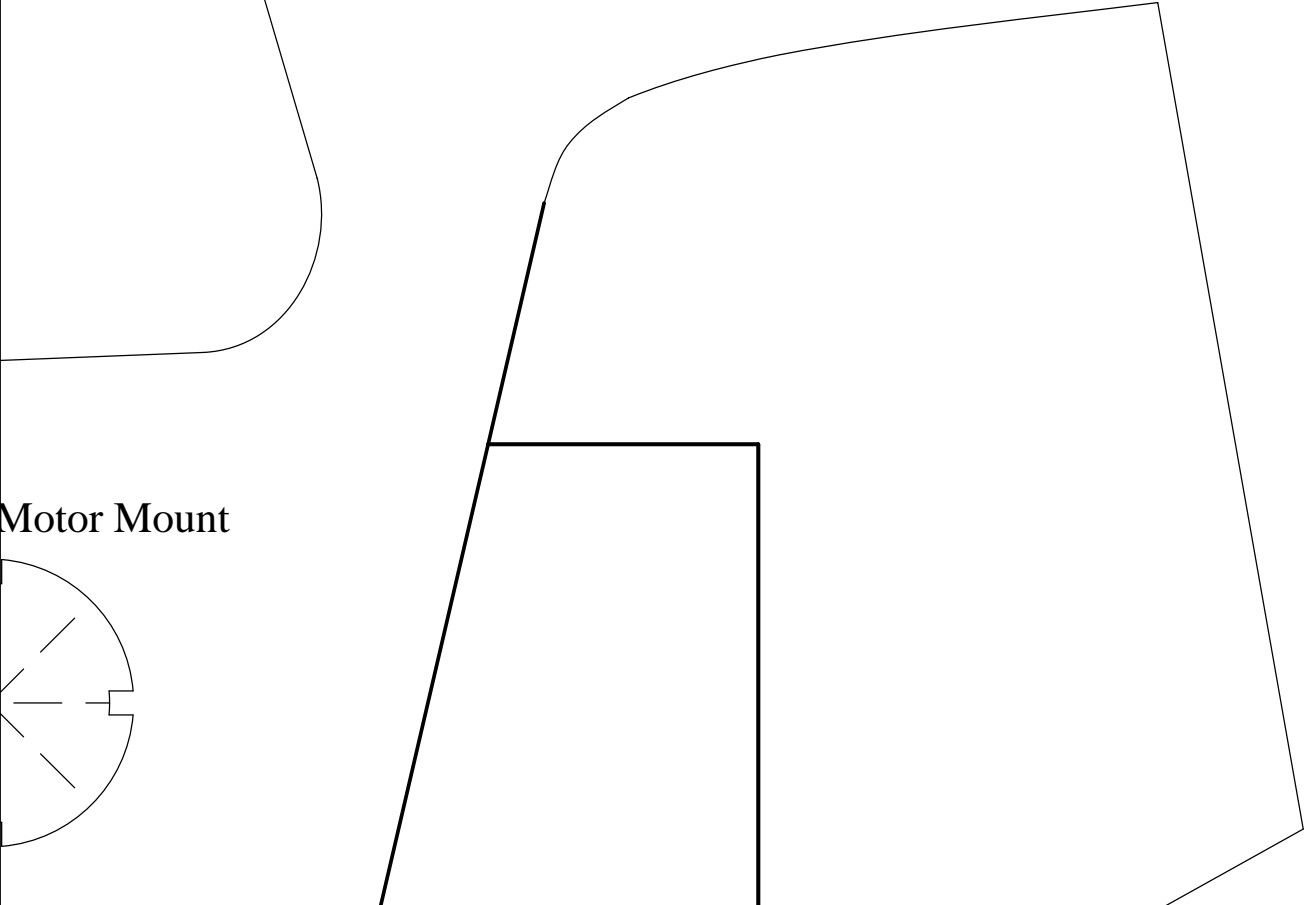
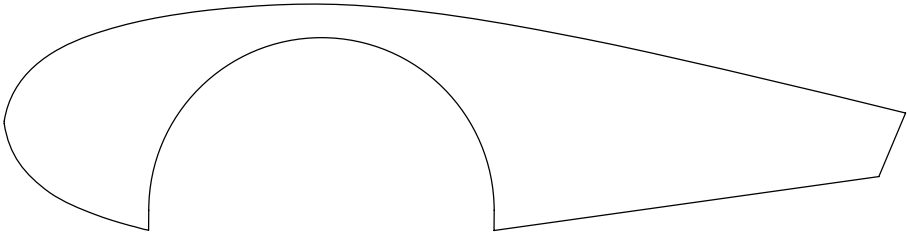
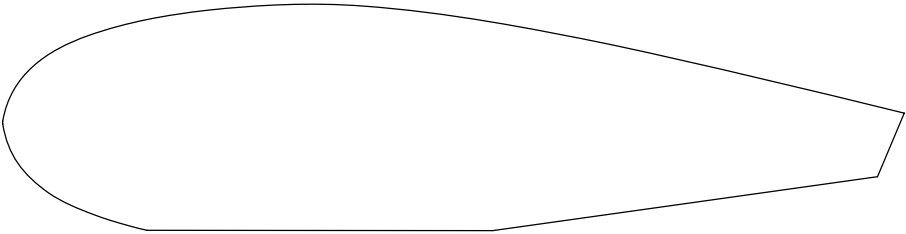
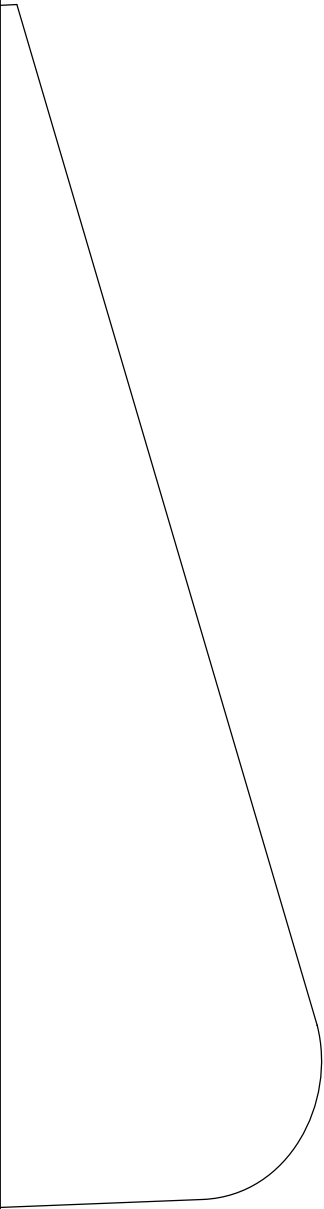
Copyright 2005-2006 Foamy Factory Models











Motor Mount

